



MOTION PRO, INC.
3171 Swetzer Road
Loomis, CA 95650
Tel 650.594.9600 Fax 650.594.9610
www.motionpro.com

INSTRUCTIONS

MOTION PRO CR Pro™ SE Throttle P/N 01-2812



A. Throttle Tube
(P/N 01-0087)



B. Housing Lower Half and Bolts
(P/N C01-2812A)



C. Housing Upper Half
(C01-2812B)



D. Cable Guide
(C01-2812C)

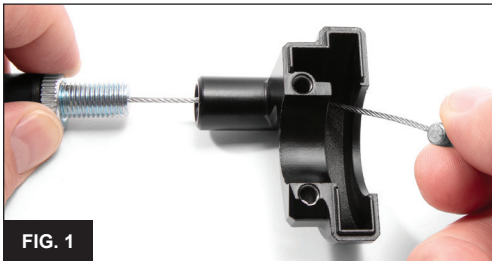


FIG. 1

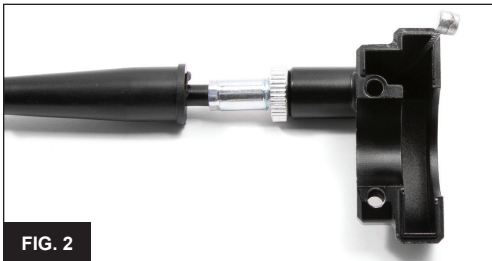


FIG. 2

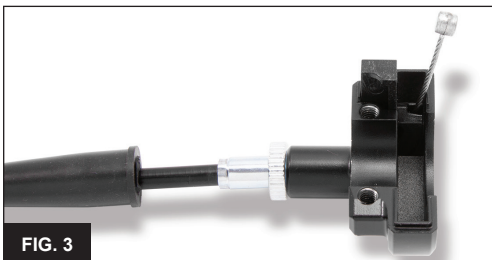


FIG. 3



FIG. 4

1. For optimal performance, lubricate throttle cable before installing the throttle. Recommend using Motion Pro Cable Lube part no. 15-0002 and Cable Luber V3 part no. 08-0609.
2. Before installing the new throttle housing, clean the throttle side of the handle bar and inspect for any damage.
3. Remove the two 5 mm mounting screws from the housing (B and C). Separate the two housing halves and remove the throttle tube (A) and cable guide (D).
4. Insert the threaded fitting on the cable into the throttle housing and feed the inner wire into the housing (**Fig. 1**). Make sure the threaded free length adjuster is fully compressed (**Fig. 2**), this will give you the most inner wire free length and make assembly easier.
5. Install the cable guide (D). Make sure that the inner wire is fully seated inside the groove on the guide and that the guide is pushed all the way into the housing (**Fig. 3**).
6. Place the throttle tube (A) onto the handlebar, add a small amount of grease to the fitting on the inner wire and insert the fitting into the throttle tube (**Fig. 4**).
7. Install the upper and lower halves of the housing onto the handle bar and tighten the two 5 mm mounting screws to 4 nm (36 in LBS).
8. Adjust cable free play as described in your OEM service manual. There should always be a small amount of free play in the cable so that the throttle is not held open.
9. Install grips as per their instructions. We recommend Motion Pro RoadControl™ Grips part no. 01-1131 and Motion Pro Grip Glue part no.15-0003.

IMPORTANT: Before starting your vehicle, first test the throttle function with the engine off. Make sure the throttle closes completely when the throttle is released and check that the cable and throttle are operating smoothly with no stickiness. Then make sure vehicle is in neutral, start engine, and make sure throttle operates smoothly, closes completely, and that engine RPM does not increase when handlebars are turned in each direction to full range of movement.

WARNING: FAILURE TO INSTALL THESE COMPONENTS CORRECTLY MAY RESULT IN GREAT BODILY INJURY OR DEATH. INSTALLATION SHOULD BE PERFORMED BY A PROFESSIONAL TECHNICIAN. FOLLOW ALL OEM PROCEDURES AND TORQUE VALUES AS OUTLINED IN THE FACTORY SERVICE MANUAL.