



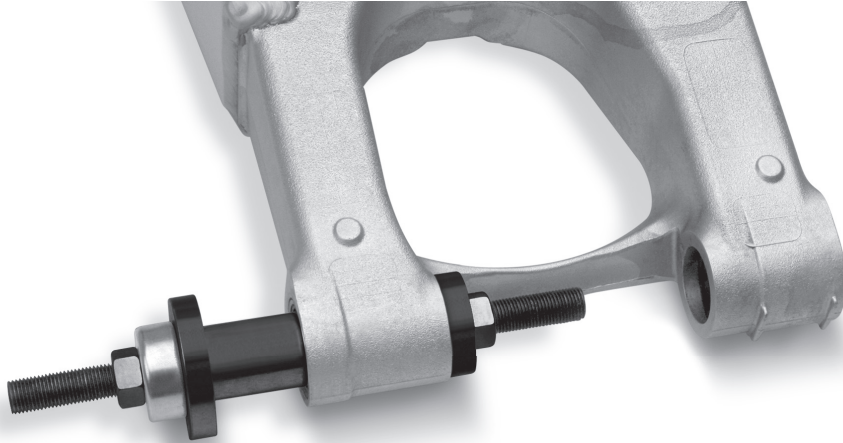
MOTION PRO, INC.  
 3171 Swetzer Road  
 Loomis, CA 95650  
 Tel 650.594.9600 Fax 650.594.9610  
 www.motionpro.com

# INSTRUCTIONS

## MOTION PRO Swingarm Bearing Installation Tool P/N 08-0213

Designed for use on late model off-road motorcycles from 1990 to present.  
 This tool has the necessary drivers to fit the main swingarm needle bearings.

**IMPORTANT MAINTENANCE NOTE: CLEAN AND LUBRICATE THE THREADED ROD BEFORE EVERY USE.**



### BEARING SIZE USE DRIVER

HONDA	
22X28	D
22X29	D
KAWASAKI	
20X27	F
22X28	D
22X29	D
KTM	
22X28	D
HUSABERG	
22X28	D
SUZUKI	
20X27	F
21X27	E
22X28	D
22X29	D
YAMAHA	
20X27	F
22X27	E
22X28	D

1. Begin by selecting the correct size driver (see chart) and inserting it into the swingarm bearing.

**Note:** The driver O.D. must be slightly smaller than the I.D. of the swingarm.

2. Install the threaded rod through the driver and swingarm bearing and slide the unit, (bearing first) into the swingarm until there is an equal amount of thread on each side.

3. Slide the thrust bearing onto the threaded rod next to the driver (with the rounded shoulder side facing the driver) and then slide one of the two solid washers (largest that will fit) onto the threaded rod on the opposite side of the swingarm.

4. Complete the tool assembly by threading a nut onto each side of the threaded rod.

5. Check the tool to insure that it is aligned squarely to the swingarm bearing and begin tightening the nut outside the thrust bearing.

6. Continue to monitor the bearing alignment until the bearing is seated in the exact location required by the manufacturer's specification.

### IMPORTANT:

Be sure to drive the bearing to the exact location required by the manufacturer's specification. If in doubt, measure the location of original bearings before their removal.

### TOOL COMPONENTS

- Threaded Rod
- Thrust Bearing
- D, E and F Drives
- Large Washer
- Small Washer
- Two Nuts

