



MOTION PRO, INC.
3171 Swetzer Road
Loomis, CA 95650
Tel 650.594.9600 Fax 650.594.9610
www.motionpro.com

INSTRUCTIONS

MOTION PRO KTM HEIM JOINT TOOL P/N 08-0434



Bearing Extractor
C08-0434B



Installation Drive
C08-0434C



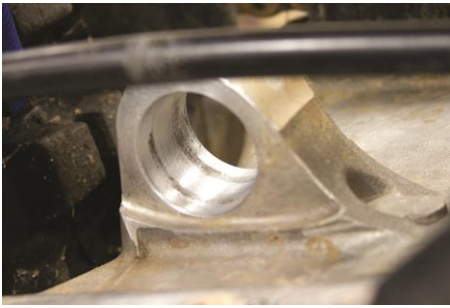
1. Remove shock, inner fender mud flap, and brake line clip.
2. Remove inner shock bushings from both sides of heim joint. Occasionally, the inner shock bushings will become frozen in the heim joint due to corrosion. If this is the case, use a drift punch to knock them free as shown in the pictures above.



3. Remove right heim joint seal using a seal puller or a flat blade screw driver. When removing the seal be careful not to scratch the inside of the shock mount boss.



4. Place the bearing extractor on the handle and insert through the center of the heim joint. Drive the bearing out using a mallet.



5. Carefully clean the inside of the swing arm bearing surface using fine scotch-brite and contact cleaner to remove any burrs or corrosion.



6. Place the new bearing onto the bearing extractor and then into the installation adapter with the recess facing the bearing. Then insert handle into installation adapter as shown.

7. Place a light coat of grease or assembly lube on both the bearing and the bearing extractor to prevent damage during the installation. Rotate the flat portion of the installation adapter so it is aligned with the flat on the shock mount boss. Using a mallet, drive the bearing into the boss until it is fully seated against the installation adapter.

8. Using the extraction adapter, carefully install the new seals until they are flush with the sides of the shock mount boss. We at Motion Pro hope you have found these instructions useful and that this tool has made the job as easy as possible. If you have any further questions regarding this or any of our products, please see us at www.motionpro.com or call at (650) 594-9600.