



## SWINGARM BEARING TOOL, 20 MM, FOR TALARIA P/N 08-0767

**WARNING!** Refer to your factory service manual for the instructions for accessing these parts for service. Failure to follow service manual instructions and/or improper use of this tool could result in great bodily injury or death. Always use safety glasses when using this tool.

Here's what you'll need to complete installation of your swingarm bearing components:

- A. 22 mm Socket
- B. 22 mm Open end wrench
- C. New sealed swingarm bearings
- D. Waterproof grease

FIG. A, REMOVAL

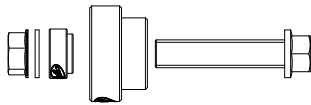
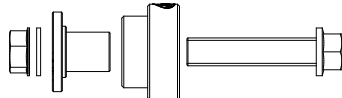


FIG. B, INSTALLATION



### Bearing Removal

1. Remove the rear swingarm.
2. See **Fig. A** for proper tool configuration and components to be used for bearing removal. Install the tool as shown with the driver and nut on the inside of the frame.
3. Begin pulling the bearing out by tightening the bolt while holding the nut. Use only hand tools to pull the bearing, **DO NOT USE AN IMPACT DRIVER.**
4. Continue tightening until the bearing is completely pulled and removed from the frame.

### Bearing Installation

5. Carefully clean the bore in the frame, and apply a thin layer of grease to aid with bearing installation.
6. See **Fig. B** for proper tool configuration and components to be used for bearing installation. Position the bearing guide in the frame as shown.
7. Position the bearing and the rest of the tool, then tighten the nut by hand until the bearing is held in place.
8. Holding the nut, begin driving the bearing into the frame by tightening the bolt. **Note:** The bearing should drive in without excessive force, if the bearing begins to bind or is not aligned loosen the tool and re-position as necessary. Take your time, and **DO NOT ATTEMPT TO INSTALL USING AN IMPACT DRIVER.**
9. Continue to drive the bearing until it is fully bottomed out in the frame, then remove the tool and check that the bearing rolls smoothly.
10. Installation is now complete.

